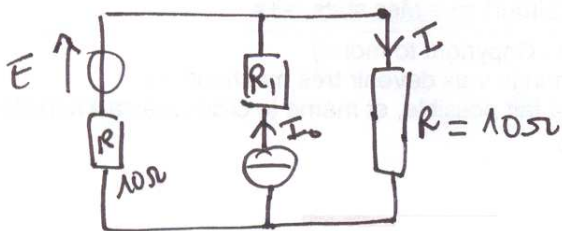


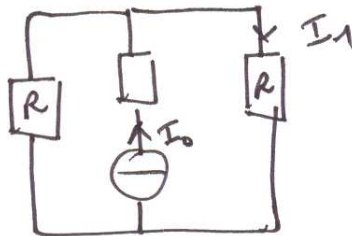
Première STI (5+)

CORRECTION

Théorème de superposition:



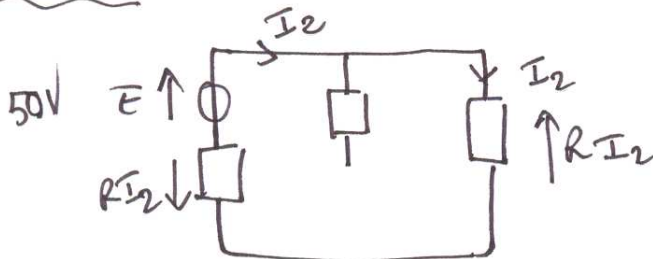
on "éteint" E :



$$I_1 = I_0 \times \frac{R}{R+R}$$

$$\underline{I_1 = 2,5 A}$$

on "éteint" I0 :



$$E - R I_2 - R I_2 = 0 \Rightarrow I_2 = \frac{E}{2R}$$

$$I_2 = 2,5 A$$

conclusion: I traversant R :

$$I = I_1 + I_2$$

$$\underline{\underline{I = 5 A}}$$